

## Instructions to enjoy ICPPCT 2023

Book your accommodation for a few days before and after the conference if you wish, most of the guests will be staying here (<https://www.clarioncongresshotelceskebudejovice.com/en/>), but there are hundreds of other places nearby. If you really want to save, you can contact [oppolzeroval@mail.vstecb.cz](mailto:oppolzeroval@mail.vstecb.cz) to stay at the VŠTE campus (mention that you will be participating in ICPPCT 2023).

Most of you will arrive in the Czech Republic by plane at Václav Havel Airport code: PRG), once you are already in Prague, it would be advisable to stay for at least 1 days and visit Prague castle, Charle's bridge and other tourist hotspots (if you don't mind being overwhelmed by experiences, it can be done in 1 day). If You need some guidance contact (+420 775 864 656),



3/ the easiest way to get from the PRG airport to the conference location (České Budějovice) is to hop on the Airport express bus (aka AE which goes every 30 minutes, tickets sold by bus driver for 100 CZK = 4€) which goes to Praha hlavní nádraží (Prague main train station) and then to continue by train. You can buy the train ticket online ([cd.cz/en](http://cd.cz/en)), but this is not mandatory. Train from Prague to České Budějovice goes like every 40 minutes (usually from platform 7J). Trains with the prefixes IC and EC are the fastest (1:40h, 240 CZK). R-prefixed trains are a bit cheaper, but slower (2:20h, 210 CZK) so it may be better to take a short walk around the train station and wait for the next IC or EC train instead.



## PROGRAM

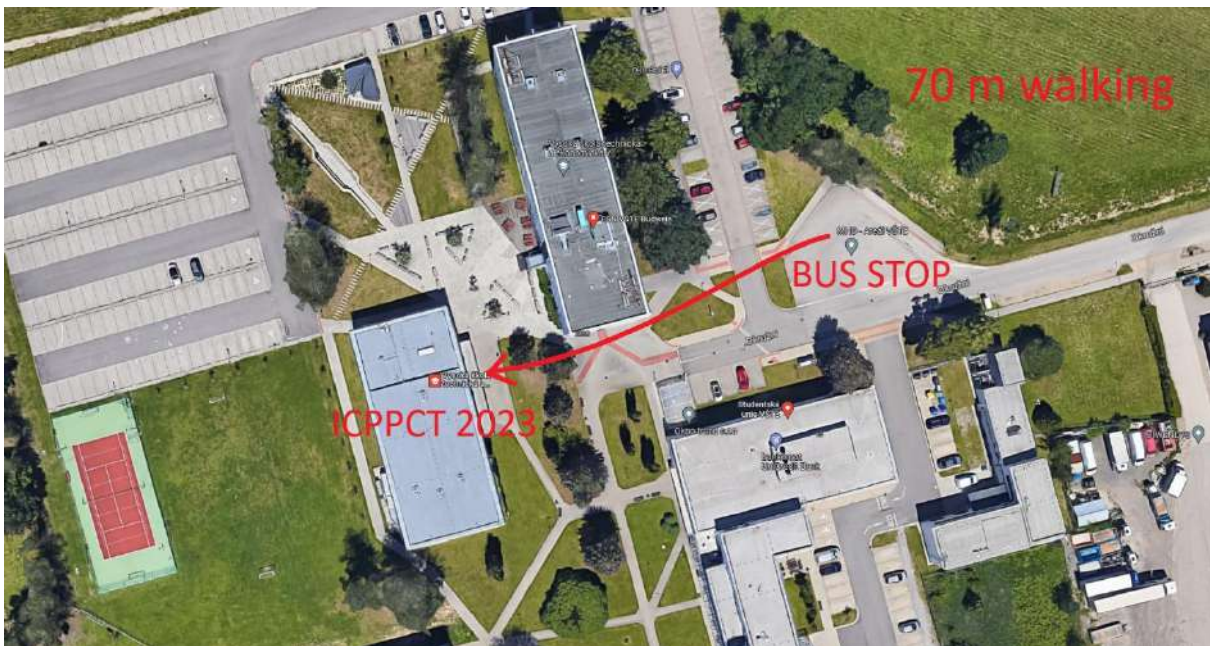
**12 September**

Enjoy yourself in České Budějovice (if any questions: +420 775 864 656)



**13 September**

Place: VŠTE (address: Okružní 517/10) <https://goo.gl/maps/qETcWpkbz8ewVKUj6>  
BUS station name „Areál VŠTE“



If you (by mistake) get off at the station „Okružní VŠTE“ you will have to walk like 200 meters instead of 70 m



However, the buses to VŠTE don't go often (numbers 14 and 18 only), so please consider a taxi service.

For example, bus number 18 goes from the station "Nádraží" (Train station) to Areál VŠTE at 08:05, 08:31, 09:19, 09:50, 10:50 etc. The journey takes 11 minutes. Application for bus timetable <https://www.dpmcb.cz/aplikace.html>

### Scientific Program:

**13-15 September: Scientific Program (Check the Program file)**

### Other attractions:

On your own trip to Český Krumlov or Hluboká nad Vltavou (can be organised upon the wish)





## 16 September

On your own (on the way back to Prague)

Táborská setkání (Tábor Meetings, medieval festival) <https://www.taborskasetkani.eu/en/>



**17 September**

On your own (burčák (young wine) season in Moravia - eastern part of the Czech Republic)



Enjoy your time in České Budějovice and Prague.

See you soon.

\*\*\*\*\*